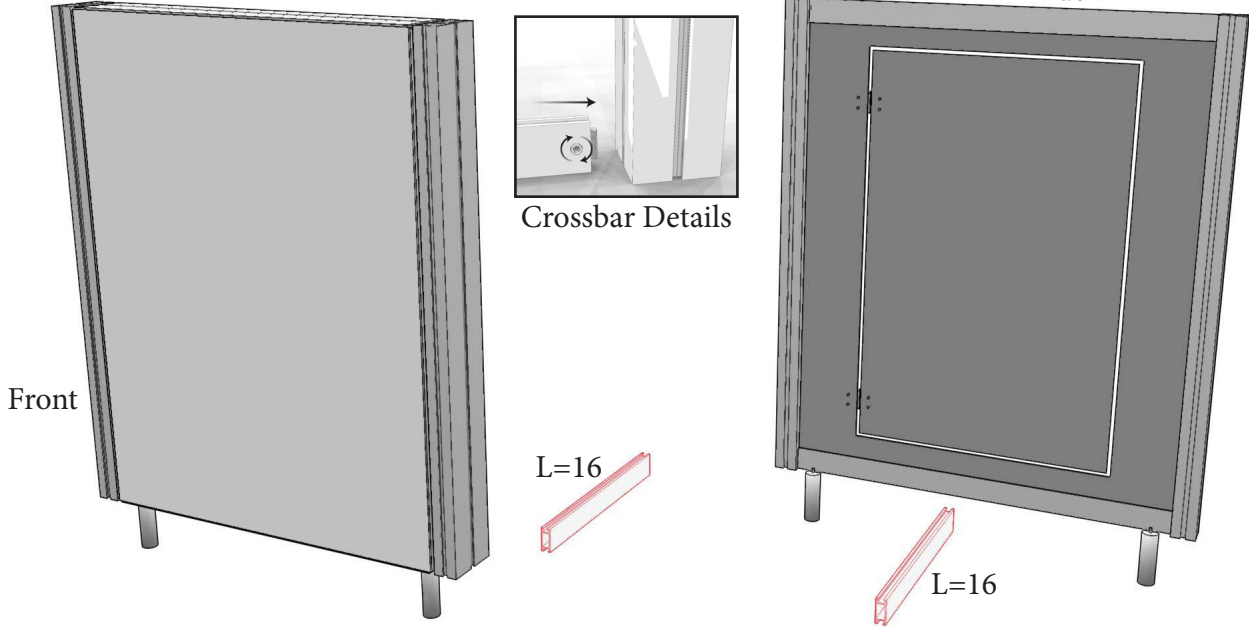
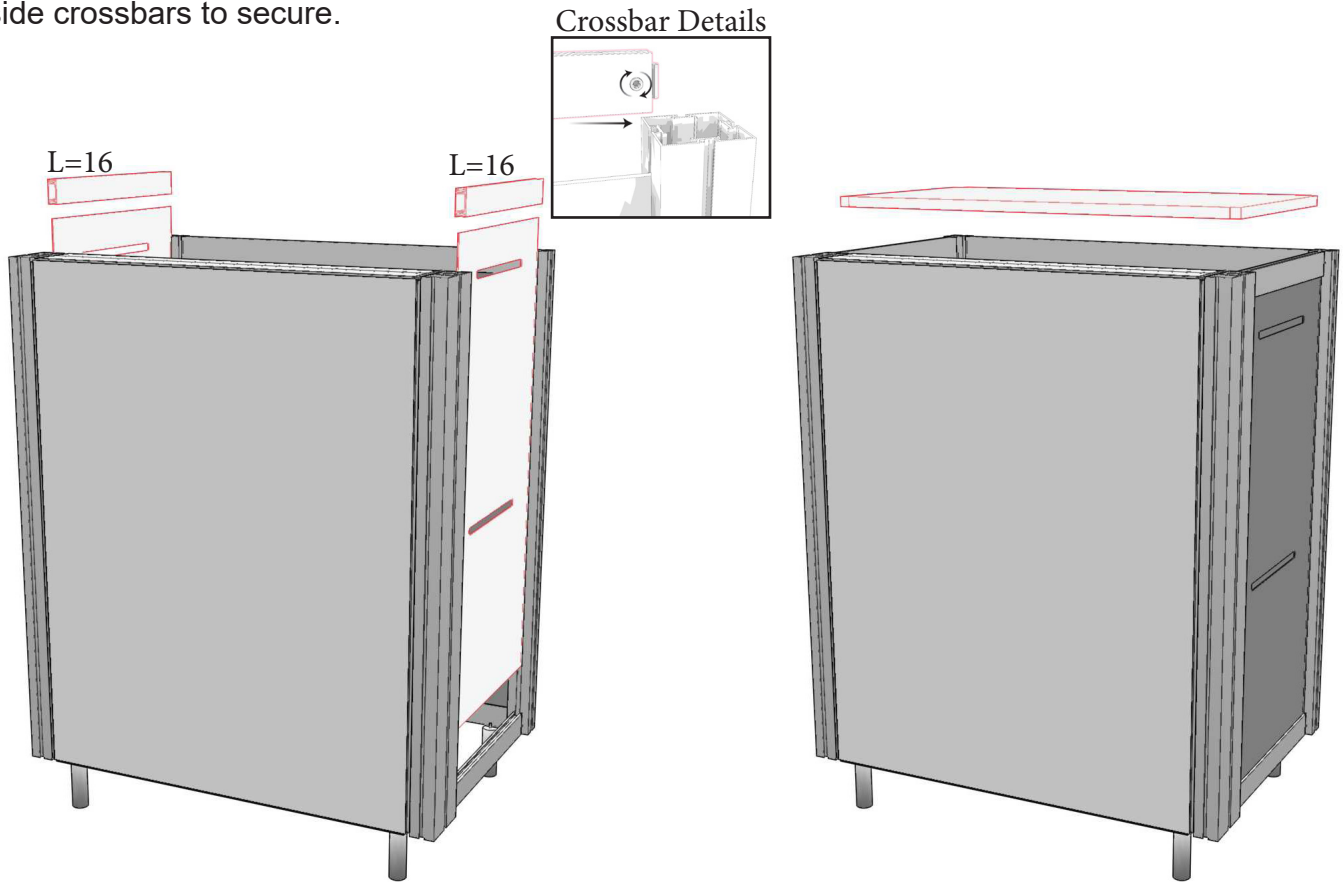


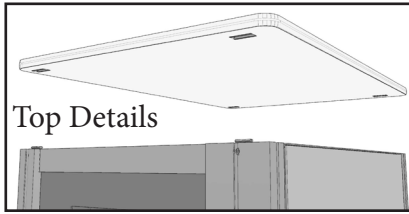
**Step 1.** Attach front to back using x2 side crossbars each.



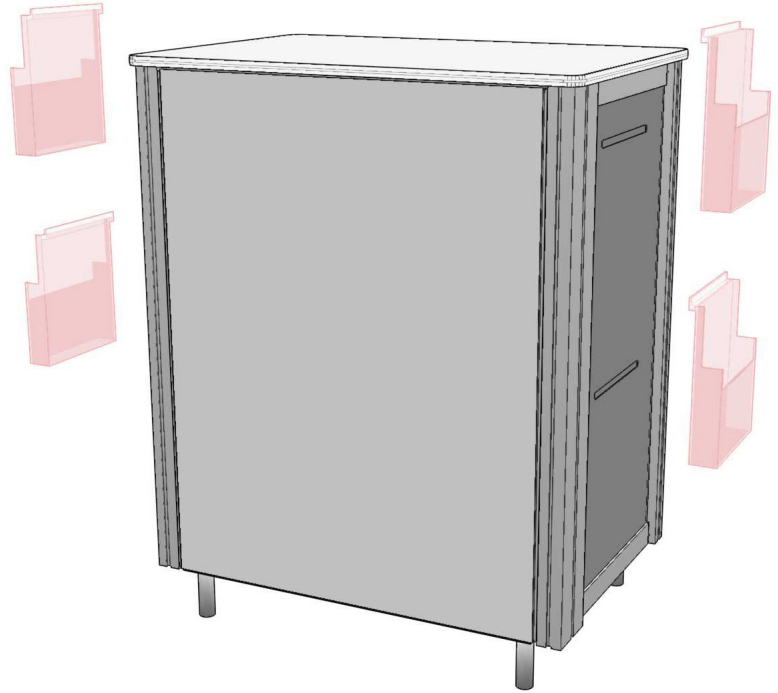
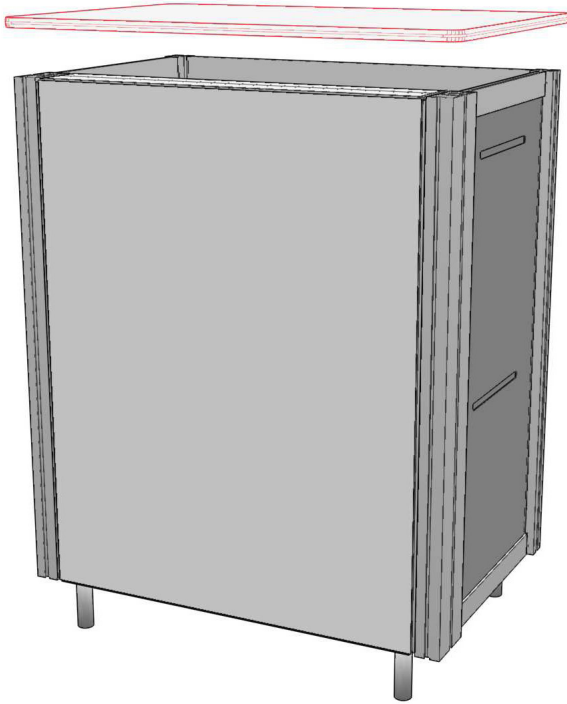
**Step 2.** Drop side infill panels into slot; attach top side crossbars to secure. **Step 3.** Drop bottom shelf onto bottom crossbars.



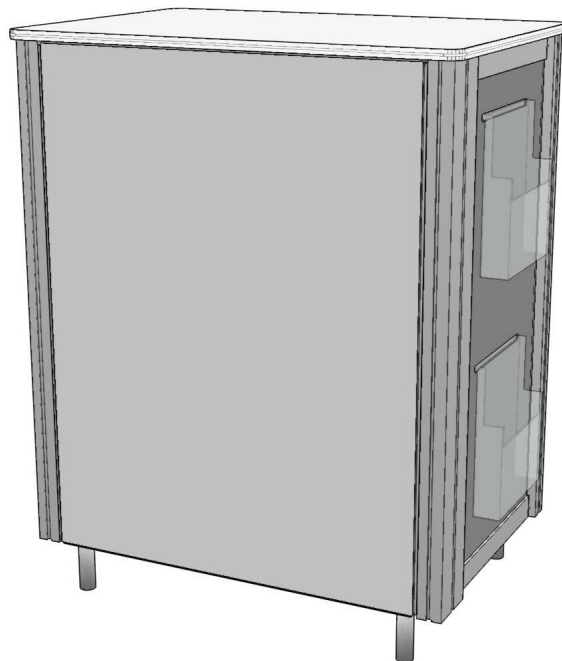
**Step 4.** Drop tops onto columns; tighten side CBXs using 5mm hex driver to secure tops.



**Step 5.** Attach back velcro panel; attach literature shelves into side slots.

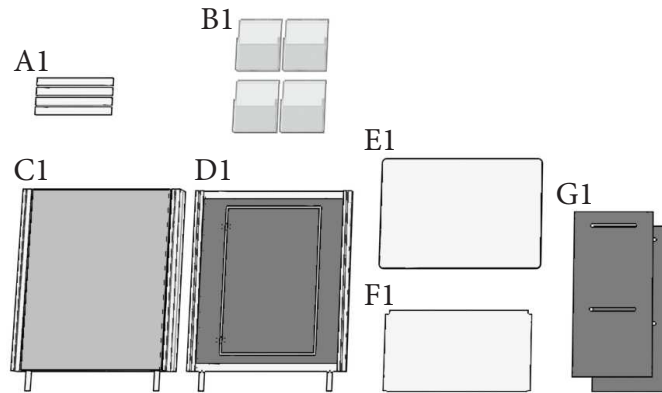


**COMPLETE**



---

Parts List



A1.) x4 L=16" Side cross-bars

B1.) x4 Literature shelves

C1.) x1 Front

D1.) x2 Back

E1.) x1 Top

F1.) x1 Internal shelf

G1.) x2 Side panels