

# Formulate Tablet Kiosk - 05

## TABLET-STD-05



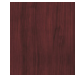

Sleekly-designed Formulate® free standing tablet kiosks make it easy to encourage interactivity, present information and engage your customers in any space.



### features and benefits:

- Aluminum tube frame with sturdy internal spigot assembly
- Small monitor mount with tube clamps
- Tablet holder with mounting hardware
- Wooden base with push fit channel design
- Silicon Edge Graphic (SEG) pillowcase
- Wheeled shipping case
- Easy to store and ship
- Quick to setup
- Lifetime hardware warranty against manufacturer defects

### dimensions:

Hardware	Graphic
<p>Assembled unit: 30" w x 85.125" h x 23" d 762mm(w) x 2163mm(h) x 585mm(d)</p> <p>Approximate weight: 25 lbs / 12 kgs</p>	<p>Refer to related graphic template for more information.</p> <p>Visit: <a href="http://www.exhibitors-handbook.com/graphic-templates">www.exhibitors-handbook.com/graphic-templates</a></p>
Shipping	<b>additional information:</b>
<p>Packing case(s): 1 OCH2</p> <p>Shipping dimensions: 52" l x 29" h x 15" d 1321mm(l) x 737mm(h) x 381mm(d)</p> <p>Approximate total shipping weight: 55 lbs / 25 kgs</p>	<p>Graphic material: Dye-sublimation pillowcase fabric</p> <p>Monitor sizes: 17" - 37" Monitor weight: 30 lbs. max</p> <p>Tablet holder compatible with Air iPads, 2nd - 4th generation tablets only.</p> <p>Monitor and tablet not included.</p> <p>When included in a larger kit, a different packaging solution will be listed to accommodate all contents of the kit. Individual packaging no longer provided.</p> <p><b>Base Colors:</b></p> <div style="display: flex; justify-content: space-around; align-items: center;"> <div style="text-align: center;">  silver         </div> <div style="text-align: center;">  black         </div> <div style="text-align: center;">  mahogany         </div> <div style="text-align: center;">  natural         </div> </div>

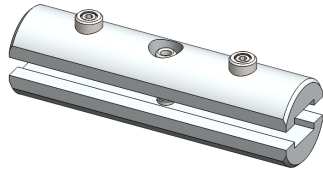
We are continually improving and modifying our product range and reserve the right to vary the specifications without prior notice. All dimensions and weights quoted are approximate and we accept no responsibility for variance. E&OE. See Graphic Templates for graphic bleed specifications.

# Included In Your Kit

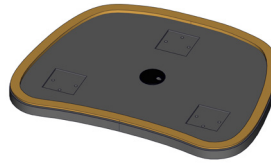
Tools, Components, & Connectors



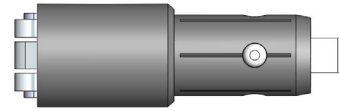
ALLEN KEY SET x1



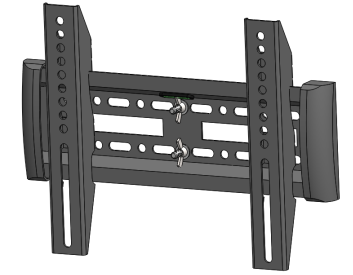
ES30 x13



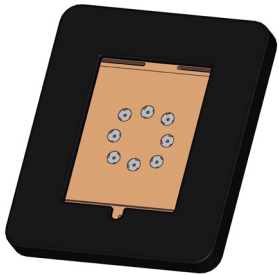
STD-01-BASE x1



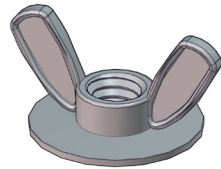
TC-30-L x1



TUBE-SM-MB x1



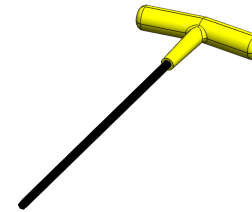
TABLET-HOLDER x1



FLANGED WING NUT, 5/16"-18 x9



SET-SCRW-5-16-2 x9



TC-30-L x1

Graphics

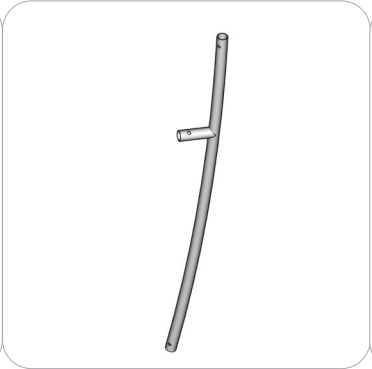


STD-05-G x1

# Included In Your Kit



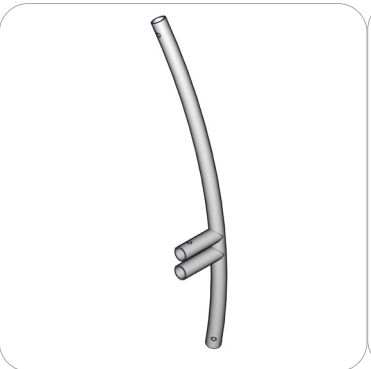
TABLET-STD-05-T1 x1



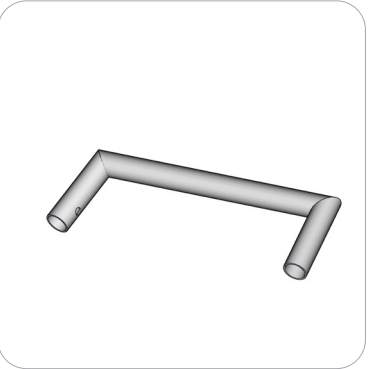
TABLET-STD-05-T2 x1



TABLET-STD-05-T3 x1

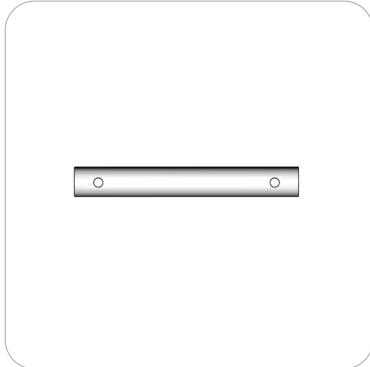


TABLET-STD-05-T4 x1



TABLET-STD-05-T5 x1

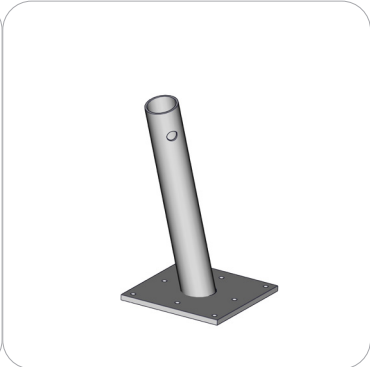
Tubes



TABLET-STD-05-T6 x2



TABLET-STD-05-T7 x1



TABLET-STD-05-T8 x1



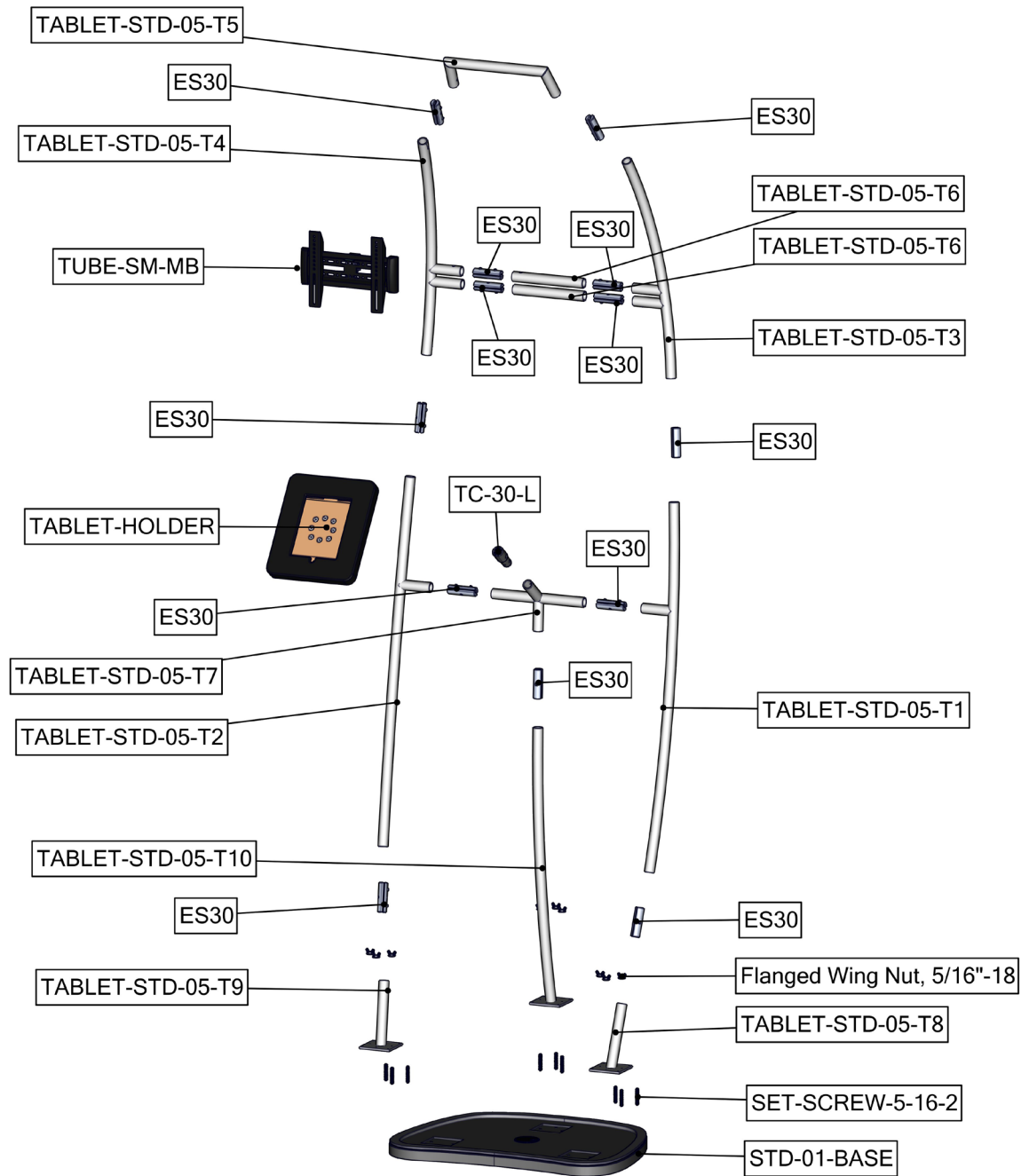
TABLET-STD-05-T9 x1



TABLET-STD-05-T10 x1

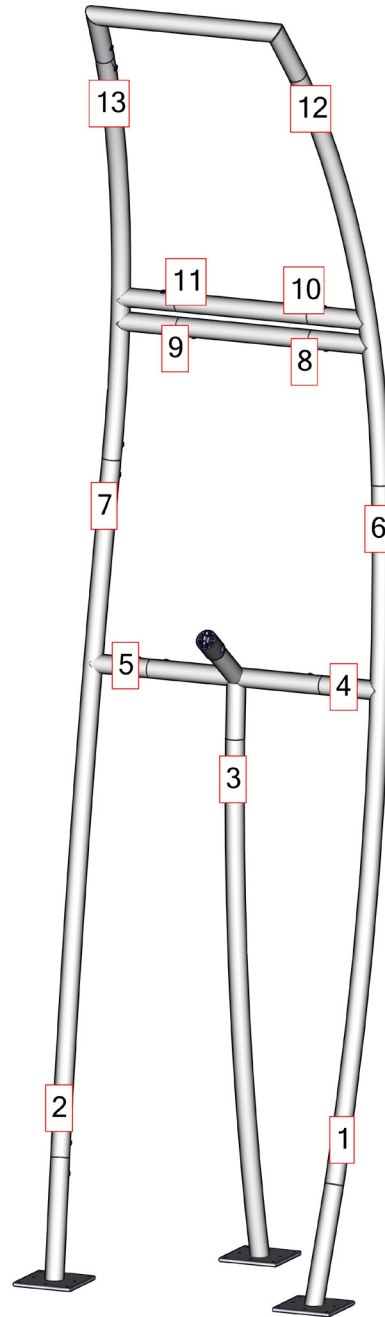
# Exploded View

## TABLET-STD-05



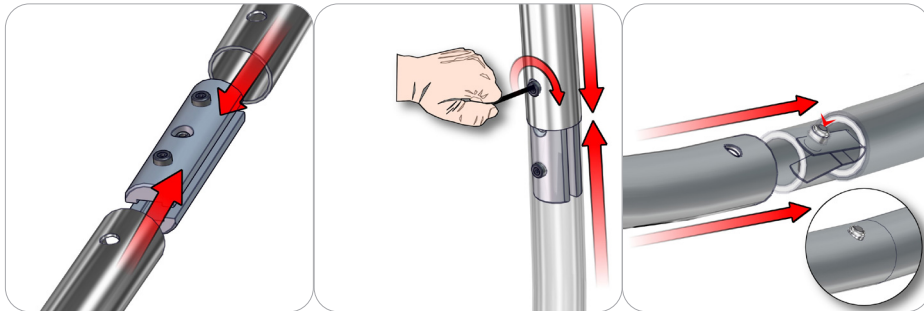
# Labeling Diagram

TABLET-STD-05



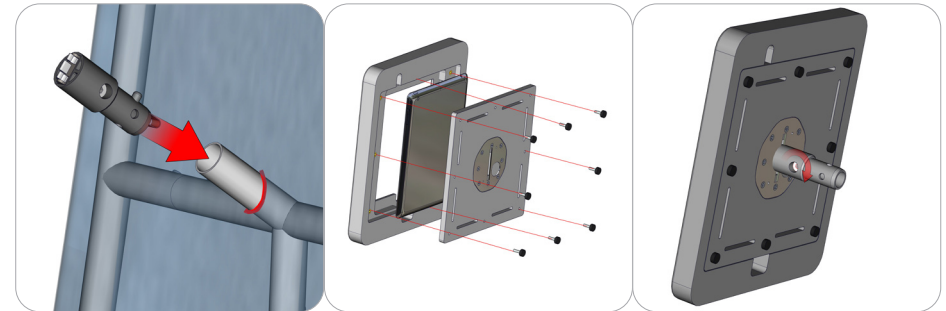
# Connection Methods

## Connection Method 1: ES30



For snap button connections, locate the snap button on the connector or swage tube. Locate the hole on the corresponding tube. Press the snap button with your thumb and slide the tube and connector together so that the snap button snaps fully into the lock hole. To disassemble, press the snap button and pull apart.

## Connection Method 2: TC-30-L



Attach the TC-30-L to the tube and twist it. For tablet holder attachment, tighten the back plate with screws and attach the TC-30-L to the tablet holder. Twist the TC-30-L to lock it in place.

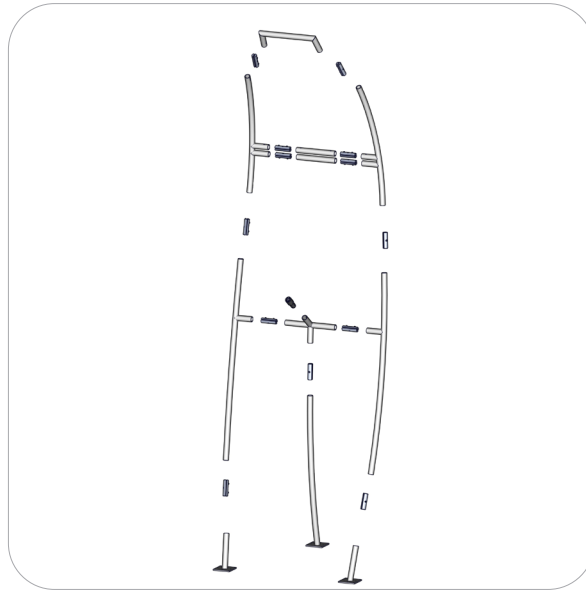
# Kit Assembly

## Step by Step

### Step 1.

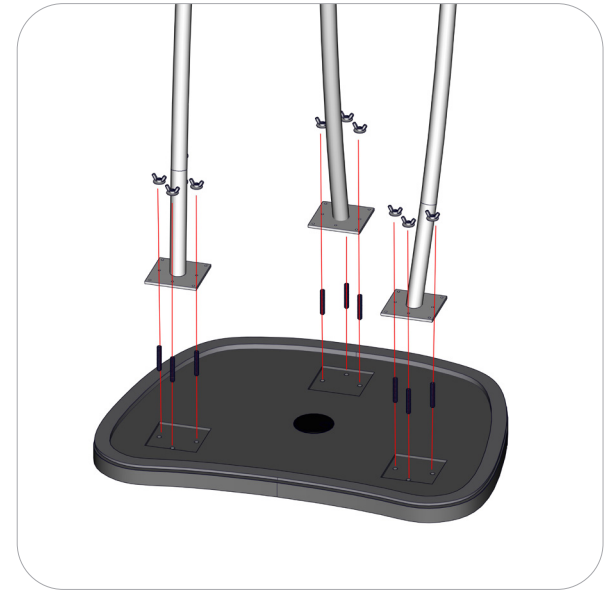
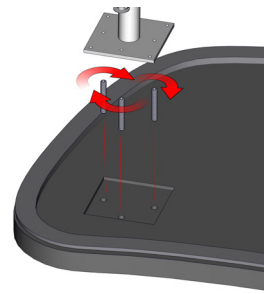
Gather the components to build the frame. Use the Exploded View and the Labeling Diagram for part labels.

Reference Connection Method 1 for more details.



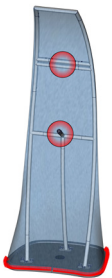
### Step 2.

Attach the frame to the base by tightening in the screws and then tightening the wing nuts.



### Step 3.

Take the graphic and pull it over the frame, aligning it with the base.



### Step 4.

Take the monitor bracket and tablet holder and attach it to the frame.

Reference Connection Method 2 for more details.

